

MICRO PINS



- Precision engineered and manufactured
- Space saving design for high density packaging
- Micro pins are available in .017 (.43) to .080 (2.03) diameters
- Ideal for mating with our standard line of micro jacks
- Available for press-fit, swage or solder mounting
- Custom micro pins manufactured to your specifications
- Other platings available upon request

SPECIFICATIONS

Material: Brass, ASTM-B16
Plating:
Gold: .000010 per MIL-G-45204, Type II
Tin: .000200 to .000300 per MIL-T-10727, Type 1

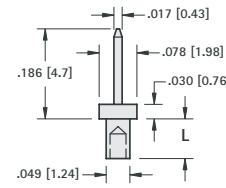
RoHS (RoHS Compliant)

DASH NUMBERS (L Dimension)

- 1 for .032 (.81) thick Board
- 2 for .062 (1.57) thick Board
- 3 for .093 (2.36) thick Board
- 4 for .125 (3.2) thick Board

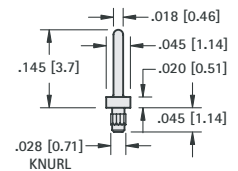
Example: 1967-1 for .032 (.81) thick Board
 1967-2 for .062 (1.57) thick Board

.017 (.43) PIN - SWAGE MOUNT



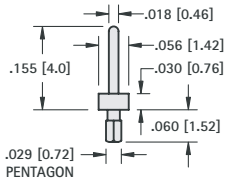
GOLD CAT. NO.	TIN CAT. NO.	L Length	Mtg. Hole Dia.
1967-1	1968-1	.051 (1.3)	.052
1967-2	1968-2	.082 (2.0)	(1.32)

.018 (.46) PIN - PRESS-FIT



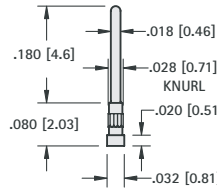
GOLD CAT. NO.	TIN CAT. NO.	Mtg. Hole Dia.
1986-1	1987-1	.026 (.66)

.018 (.46) PIN - PRESS-FIT



GOLD CAT. NO.	TIN CAT. NO.	Mtg. Hole Dia.
1988-2	1989-2	.026 (.66)

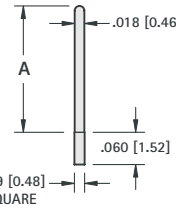
.018 (.46) PIN - PRESS-FIT



GOLD CAT. NO.	TIN CAT. NO.	Mtg. Hole Dia.
1990-2	1991-2	.026 (.66)

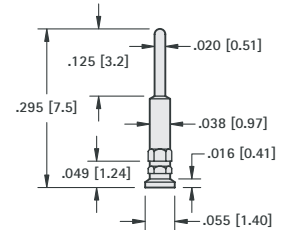
MATERIAL:
Phosphor Bronze

.018 (.46) PIN - PRESS-FIT



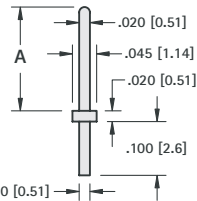
GOLD CAT. NO.	TIN CAT. NO.	A Dim.	Mtg. Hole Dia.
1992-2	1994-2	.243 (6.2)	.022
1993-2	1995-2	.140 (3.6)	(.56)

.020 (.51) PIN - PRESS-FIT



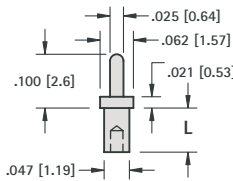
GOLD CAT. NO.	TIN CAT. NO.	Mtg. Hole Dia.
1996-2	1997-2	.040 (1.0)

.020 (.51) PIN - PRESS-FIT



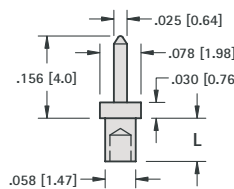
GOLD CAT. NO.	TIN CAT. NO.	A Dim.	Mtg. Hole Dia.
1998-3	2000-3	.250 (6.4)	.024 (.61)
1999-3	2001-3	.425 (3.6)	(.61)

.025 (.51) PIN - SWAGE MOUNT



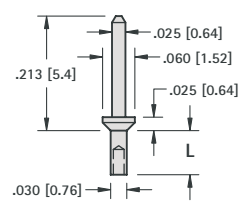
GOLD CAT. NO.	TIN CAT. NO.	L Length	Mtg. Hole Dia.
1404-1	1424-1	.051 (1.3)	.052
1404-2	1424-2	.082 (2.1)	(1.32)

.025 (.51) PIN - SWAGE MOUNT



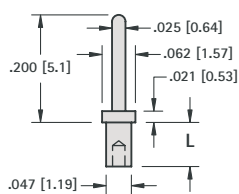
GOLD CAT. NO.	TIN CAT. NO.	L Length	Mtg. Hole Dia.
1408-1	1428-1	.062 (1.6)	.062
1408-2	1428-2	.094 (2.4)	(1.57)

.025 (.51) PIN - SWAGE MOUNT



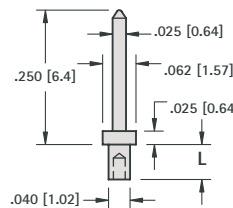
GOLD CAT. NO.	TIN CAT. NO.	L Length	Mtg. Hole Dia.
1406-1	1426-1	.047 (1.2)	.035 (.89)
1406-2	1426-2	.078 (1.9)	(.89)

.025 (.51) PIN - SWAGE MOUNT



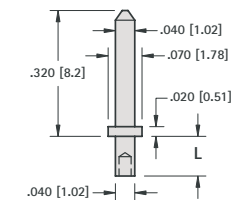
GOLD CAT. NO.	TIN CAT. NO.	L Length	Mtg. Hole Dia.
1407-1	1427-1	.051 (1.3)	.052
1407-2	1427-2	.082 (2.1)	(1.32)

.025 (.51) PIN - SWAGE MOUNT



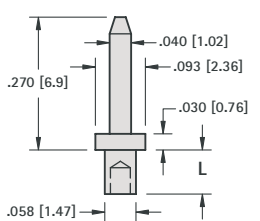
GOLD CAT. NO.	TIN CAT. NO.	L Length	Mtg. Hole Dia.
1401-1	1421-1	.065 (1.6)	.043 (1.09)

.040 (1.0) PIN - SWAGE MOUNT



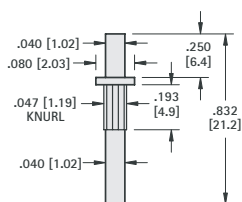
GOLD CAT. NO.	TIN CAT. NO.	L Length	Mtg. Hole Dia.
1405-1	1425-1	.051 (1.3)	.043 (1.09)
1405-2	1425-2	.082 (2.1)	(1.09)
1405-3	1425-3	.113 (2.9)	(1.09)

.040 (1.0) PIN - SWAGE MOUNT



GOLD CAT. NO.	TIN CAT. NO.	L Length	Mtg. Hole Dia.
1402-3	1422-3	.125 (3.2)	.062 (1.57)

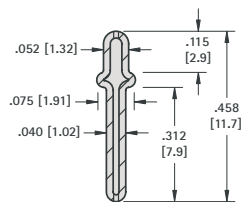
.040 (1.0) KAY PIN - PRESS-FIT



MATERIAL:
Solid Nickel Silver
CAT. NO. 1218

Mtg. Hole
.043 (1.09) Dia.

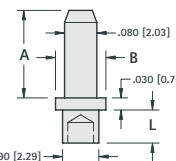
.040 (1.0) HOLLOW PIN - SWAGE MOUNT



MATERIAL:
Brass, Tin Plate
CAT. NO. 1219

Mtg. Hole
.059 (1.50) Dia.

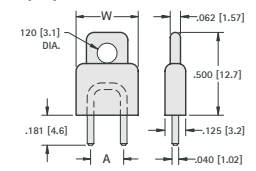
.080 (2.0) PIN - SWAGE MOUNT



Mtg. Hole .094 (2.4) Dia.

GOLD CAT. NO.	TIN CAT. NO.	A Dim.	B Dim.	L Dim.
1447-1	1455-1	.335 (8.5)	.156 (4.0)	.051 (1.3)
1447-2	1455-2	.400 (10.2)	.125 (3.2)	.094 (2.4)
1447-3	1455-3	.400 (10.2)	.125 (3.2)	.125 (3.2)
1447-4	1455-4	.400 (10.2)	.125 (3.2)	.156 (4.0)

.040 (1.0) PINS - INSULATED SHORTING PLUG



MATERIAL: Insulator: Plastic, Red or Black
Pins: Brass, Gold Plate

RED CAT. NO.	BLACK CAT. NO.	A Dim.	W Dim.
1460R	1460B	.200 (5.1)	.375 (9.5)
1461R	1461B	.250 (6.4)	.375 (9.5)
1462R	1462B	.400 (10.2)	.620 (15.7)
1463R	1463B	.500 (12.7)	.620 (15.7)